

# THE TETLEY

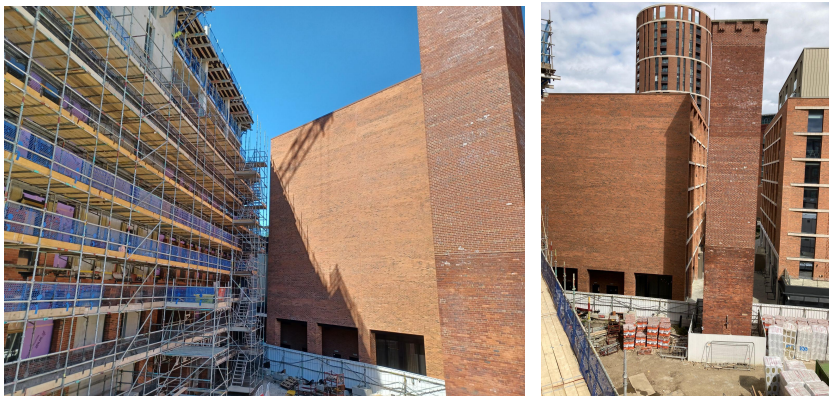
## Artist Commission at Tower Works, Leeds

Legal & General are working with The Tetley to select an artist, or artists, to create an original artwork at Tower Works, Leeds. The artwork will be in-situ for at least five years and will form the backdrop to this new development, creating almost 500 homes in Leeds South Bank. Together we want to commission an artwork that residents love to live with, and that becomes an iconic symbol of Leeds.

## The Site

The Artist Commission is to be created for a gable wall on the Lockside building at Mustard Wharf.

The area is visible in these photographs and a diagram including measurements is available to [download here](#).



The wall is made of clay facing brickwork and is 17.93m high x 16.4m wide. It is 4.83m above ground level, with the overall height of the wall 22.6m high, [a drawing of the elevation is available for download as a PDF](#).

The site is in the heart of the Tower Works development which is creating one, two and three bedroom apartments to rent. The site is visible from many of the apartments and from the new public squares that are being created as part of the site. The new scheme will complement the existing Mustard Wharf rental scheme next door, also owned by Legal & General. Once complete there will be in excess of 1,000 residents living there.

## History

Tower Works was formerly the site of a pin factory founded by T. R. Harding and later managed by his son Thomas Walter Harding, to make steel pins for carding and

combing in the textile industry. Three redbrick towers of historical significance remain from the factory.

The largest and most ornate tower (built in 1899, and designed by architect William Bakewell) is based on Giotto's Campanile in Florence and was used to extract iron dust. The smaller ornate tower (built in 1866, by architect Thomas Shaw) is styled after the Torre dei Lamberti in Verona and was used as a chimney. A third plain tower, built as part of Harding's final phase of expansion in 1919, is thought to represent a Tuscan tower house such as can be seen in San Gimignano. All three towers are listed structures, the two ornate towers being Grade II\* and the plain tower Grade II.

## **Fees & Budget**

L&G and The Tetley are inviting expressions of interest from artists working in any medium, to create a bold and inspiring artwork for Tower Works. Four artists will be invited to work up their expressions of interest into proposals, which will be exhibited at Mustard Wharf in spring 2023.

Each of the four shortlisted artists will receive a proposal fee of £1,000. The final selected artist will receive a commission fee of £2,500, with 90% paid upfront on completion of an agreement with The Tetley and 10% paid on completion of the artwork. An additional £1,000 is available for the selected artist for travel and subsistence during the production phase. The shortlisted and commissioned artists will be formally engaged by The Tetley with artist contracts and will be supported throughout the process by the Curator.

£20,000 is available for production, but this must cover all materials, access equipment, labour etc. The production budget will be managed by The Tetley in consultation with the selected artist.

## **L&G**

Tower Works is the creation of Legal & General – one of an exciting collection of destinations across the UK built specifically for rent. It's their mission to make renting fairer, safer, easier and infinitely more pleasurable.

## **The Tetley**

The Tetley is a contemporary art gallery located in the heart of Leeds South Bank. We create a platform for amazing emerging artists, present breath-taking free exhibitions and help communities and young people in Leeds find their creative voice. The Tetley has commissioned Turner-prize winning exhibitions and collaborated with partners such as Liverpool Biennial to bring world-class public art to Leeds.

## **Support and Access**

The Tetley and L&G are committed to making this opportunity accessible to all and supporting those facing barriers to apply.

- We have a separate access budget - this may be used to fund organisations/charities/support workers with a fee to work with artists to apply.
- We will also work with each selected artist on an [access 'rider' document](#) in order to outline and address any disability access needs.

Please contact The Tetley at [jack.james@thetetley.org](mailto:jack.james@thetetley.org) by Mon 14 Nov 2022, 9am if you require any additional support to enable you to put your application together, or to answer any questions.

## **Application Process**

L&G and The Tetley are inviting expressions of interest from artists working in any medium, to create a bold and inspiring artwork for Tower Works.

## **Expressions of Interest**

Initially we are inviting expressions of interest, to comprise of:

- A brief statement about, and sketch of the work you wish to create (up to 500 words and one sketch)
- A brief statement about your work to date (up to 500 words)
- A brief CV (no more than 2 pages of A4)
- Up to 8 images of supporting material and/or examples of previous work
- A completed equal opportunities form

Expressions of interest should be submitted by completing the attached application form by Mon 5 Dec 2022, 9am.

## **Application Briefing Session**

On Tues 22 Nov 2pm Jack James, Curator and Belle Coleman, Office Coordinator at The Tetley will lead an online briefing and short Q&A on the Tower Works Commission during which there will be an opportunity to ask questions via the chat function.

You can register [here](#) if you would like to attend the briefing session. Attendance to the briefing will not impact the selection process and is for information only.

## **Shortlist**

Four artists will be invited to work up their expressions of interest into proposals. Each shortlisted artist will receive a fee of £1,000. Artists will be notified by Fri 23 Dec 2022 of the outcome of their application.

The shortlisted proposals will be exhibited at Mustard Wharf in spring 2023 during which residents and members of the public will be able to vote for their preferred. The shortlisted artists will be invited to attend the exhibition launch and to meet with

the Selection Panel to discuss their proposals. They will also be interviewed for a short film about their work and proposal.

The selection panel will make the final decision, which will be announced on Wed 5 April 2023.

### **Selection Panel**

Bryony Bond – Director, The Tetley

Jack James – Curator, The Tetley

James Edmunds – Creative Lead, Build to Rent, Legal & General

Lydia Jenkins – General Manager, Mustard Wharf

### **Selection Criteria**

When creating the three landmark towers that mark the site, the architects Shaw and Bakewell were inspired by classical architecture in Italy, which added something truly unique to the Leeds skyline.

The panel will similarly be looking for an artwork that draws inspiration from the site's rich heritage and the Italian spirit of joy and optimism, while focussing on the quality craftsmanship and unique style of the site's architecture.

The panel will be selecting the shortlist and awarding the commission on the following criteria:

#### *Make it Leeds*

Will the proposed artwork reference the site and have the potential to become an iconic symbol for Leeds and the South Bank?

#### *Bring people together*

Will the proposed artwork draw in a wide range of audiences, from residents to visitors to the city?

#### *Animate the space*

Will the proposed artwork bring the public realm to life?

#### *Make it future proof*

Will the proposed artwork stay relevant and be possible to maintain?

Finally, we will consider how well the proposed artwork can be completed within the budget and timescale available.

### **Timeline**

31 October – applications open

5 December – closing date for applications

2 February – Shortlist announced & exhibition of shortlisted proposals opens

5 April—Commissioned Artist announced  
April/May – Production  
7 June – Launch